

Rosefinch Apartments 7 Shearwater Drive London, NW9 7FW

Edward Chase is delighted to present to the residential lettings market this stylish 589 square foot (approx.) one double bedroom apartment on the 15th floor of Rosefinch Apartments, Hendon Waterside. Residents are moments away from Hendon Station & Hendon Central Tube station and have a 12 hour concierge service and on-site gym. Spanning an impressive 589 square foot (approx.) is this one bedroom, one bathroom apartment located on the 15th floor of the luxurious Rosefinch Apartments. The property boasts a custom designed kitchen with integrated top of the range appliances, bright and airy reception room which has access to a large private balcony offering panoramic river views. The double bedroom is carpeted with ample space for wardrobes and storage. The three piece family bathroom suite is stylishly fitted and benefits from a shower bath. Further benefits of this well presented home are a utility cupboard, secure parking for one

- Stylish One Bedroom Apartment fully furnished to a very high standard
- Locate on 15th Floor with great views
- Residents' Gym
- Fully furnished with white good appliances included (including washer dryer)
- One parking space included
- 12 Hour Concierge Service
- Amazing panoramic view of the Reservoir
- 5 minute walk to Hendon Station and close to Hendon central station

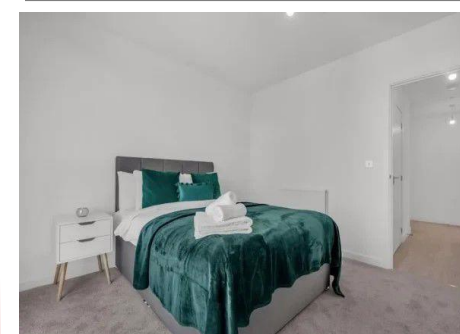
Monthly Rental Of £1,849

Rosefinch Apartments 7 Shearwater Drive London, NW9 7FW

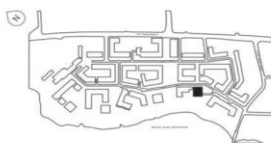
Monthly Rental Of £1,849

Edward Chase is delighted to present to the residential lettings market this stylish 589 square foot (approx.) one double bedroom apartment on the 15th floor of Rosefinch Apartments, Hendon Waterside. Residents are moments away from Hendon Station & Hendon Central Tube station and have a 12 hour concierge service and on-site gym. Spanning an impressive 589 square foot (approx.) is this one bedroom, one bathroom apartment located on the 15th floor of the luxurious Rosefinch Apartments. The property boasts a custom designed kitchen with integrated top of the range appliances, bright and airy reception room which has access to a large private balcony offering panoramic river views. The double bedroom is carpeted with ample space for wardrobes and storage. The three piece family bathroom suite is stylishly fitted and benefits from a shower bath. Further benefits of this well presented home are a utility cupboard, secure parking for one car. Situated in the sought after Hendon Waterside development, residents of the

apartment will enjoy communal landscaped gardens and views of the stunning reservoir. Located in Zone 3, Hendon Waterside is within 5 minutes walking distance of Hendon Station and close to Hendon Central Tube station. Reach central London in under 20 minutes via Thameslink or Northern Line services. Residents can enjoy the convenience of an on-site Co-op as well as Hendon Broadway's amenities. The beautiful open spaces and leisure pursuits of The Welsh Harp are on the doorstep while the fantastic shops of Brent Cross Shopping Centre and Ofsted rated Outstanding schools are just moments away. Please contact Edward Chase to view an apartment. How to view this property: Please complete the online enquiry form by selecting 'email agent'. Once your full name, email and contact number is submitted to Edward Chase we shall register your interest. When our lettings team



Harp View Apartments
1 bedroom apartment



Living/Kitchen
22'0" x 12'10" (6703 x 3927mm)

Bedroom
12'2" x 10'10" (3725 x 3303mm)

Bathroom
7'0" x 6'8" (2150 x 2050mm)

TOTAL AREA
589.32 sq ft (54.75 sq m)

Balcony
20'4" x 6'7" (6198 x 2038mm)

Score	Energy rating	Current	Potential
92+	A		
81-91	B	83 B	83 B
69-80	C		
55-68	D		
39-54	E		
21-38	F		
1-20	G		

MONEY LAUNDERING REGULATIONS 2003

Intending purchasers will be asked to produce identification and proof of financial status when an offer is received. We would ask for your co-operation in order that there will be no delay in agreeing the sale.